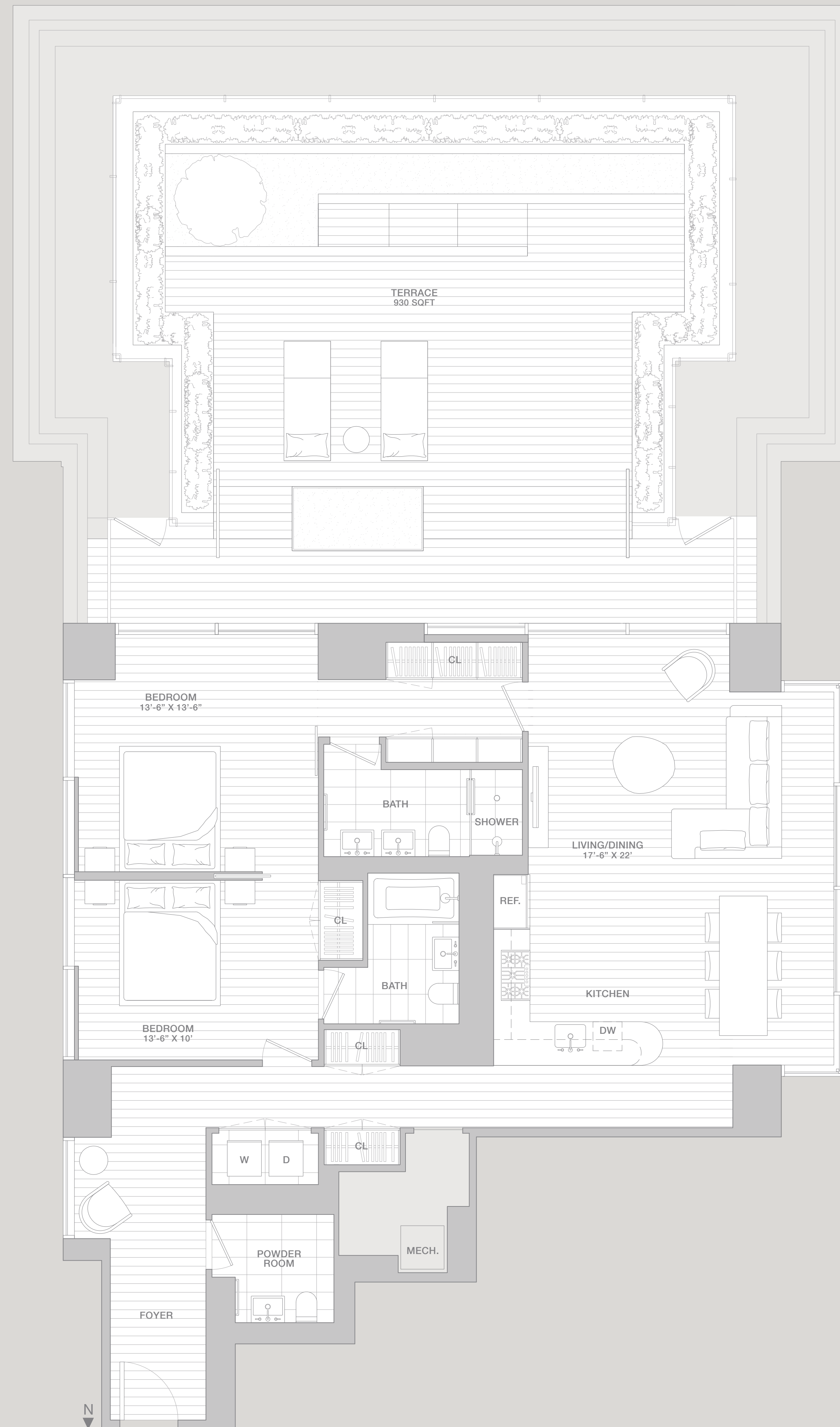


UNIT 705

2 BED • 2.5 BATH

920 I STREET NORTHWEST



SERVICES & AMENITIES

- 24-HOUR ON-SITE SECURITY
 - ON-SITE CONCIERGE AND PACKAGE RECEIVING SERVICE
 - KEY FOB ACCESS
 - 2,700 SQUARE FOOT FITNESS CENTER FEATURING STATE-OF-THE-ART CARDIO AND STRENGTH TRAINING EQUIPMENT
 - YOGA STUDIO
 - PRIVATE SPA TREATMENT ROOM
 - TWO LANDSCAPED ROOF-TOP TERRACES FEATURING OUTDOOR KITCHENS AND AN OUTDOOR DINING ROOM, AND AN OUTDOOR FIRE-PIT
 - BANQUET SIZED DINING ROOM WITH CATERING KITCHEN AND BAR LOUNGE
 - EXECUTIVE BOARD ROOM
 - MEDIA ROOM/LOUNGE WITH OUTDOOR LANDSCAPED TERRACE
 - ON-SITE GUEST SUITE*
 - DEDICATED ON-PREMISE INDOOR PARKING**
 - PRIVATE STORAGE**
 - PRIVATE LOCKED WINE STORAGE***
- * Guest suite is available at an additional charge. **Dedicated parking and storage will be available for purchase.
*** Based on availability.

LIVING & DINING AREAS

- DRAMATIC FULL HEIGHT EXTERIOR WINDOWS WITH 6" WIDE SLIDING DOORS
- 9 (4/1) FOOT CEILING HEIGHTS IN PRIMARY LIVING AREAS
- SELECT NORTHERN EUROPEAN WHITE OAK HARDWOOD FLOORING
- SURFACE MOUNTED TRACK LIGHTING AND/OR RECESSED LIGHTING

KITCHENS

- FOSTER + PARTNERS CUSTOM-DESIGNED, STATE-OF-THE-ART KITCHENS
- MOLTENI/DADA CUSTOM DESIGNED CABINETS IN BLEACHED WHITE OAK, BLEACHED WALNUT OR WHITE LACQUER FINISH
- CUSTOM BUILT-IN HOME STUDIOS BY MOLTENI – SELECT UNIT TYPES
- SELECT NORTHERN EUROPEAN WHITE OAK HARDWOOD FLOORING
- KOHLER STAINLESS STEEL UNDER COUNTER MOUNTED SINK
- GROHE SINGLE HANDLE CHROME KITCHEN FAUCET WITH PULL OUT SPRAY
- WHITE CAESARSTONE COUNTER TOPS
- MIELE, THERMADOR OR LIEBHERR REFRIGERATOR WITH INTEGRATED CABINET PANEL BY DADA
- BOSCH NATURAL GAS COOK TOP, ELECTRIC OVEN
- BOSCH OR KITCHENAID MICROWAVE
- MIELE DISHWASHER WITH INTEGRATED CABINET PANEL BY DADA

BEDROOM AREAS

- SELECT NORTHERN EUROPEAN WHITE OAK HARDWOOD FLOORING
- RECESSED OR TRACK LIGHTING
- CUSTOM DESIGNED EUROPEAN BUILT-IN WARDROBES BY MOLTENI IN BLEACHED WHITE OAK, BLEACHED WALNUT OR WHITE LACQUER FINISH

MASTER BATHROOMS/WARDROBE AREAS

- PORCELAIN TILE FLOORING AND BASE
- WHITE CAESARSTONE VANITY COUNTER TOPS – SELECT UNITS
- CUSTOM EUROPEAN CABINETS BY MOLTENI
- DURAVIT AND/OR KOHLER PLUMBING FIXTURES
- KOHLER PLUMBING FITTINGS
- CUSTOM FRAMELESS SHOWER ENCLOSURES

SECONDARY BATHROOMS/POWDER ROOMS

- PORCELAIN TILE FLOORING AND BASE
- WHITE CAESARSTONE VANITY
- KOHLER AND/OR DURAVIT PLUMBING FIXTURES
- KOHLER PLUMBING FITTINGS

UTILITY FEATURES

- BOSCH OR ELECTROLUX WASHER AND DRYER
- WATER SOURCE HEAT PUMP FOR INDIVIDUAL RESIDENCE CONTROLLED HEATING AND COOLING
- STRUCTURED CABLE FOR TELEPHONE, DATA, AND TV PROVIDED THROUGHOUT THE RESIDENCES
- MECHO SHADE ROLLER SHADES ON ALL WINDOWS (ELECTRIC OPERATION IN SELECT UNITS)
- SLIM LINE ALUMINIUM DOOR FRAMES

PRIVATE TERRACES

- LANDSCAPED PLANTERS
- CUMARU WOOD DECKING AND MASONRY PAVERS
- A HOSE CONNECTION
- OUTDOOR LIGHTING
- GFI ELECTRICAL OUTLETS
- FIXED GAS LINE FOR GAS BARBEQUE GRILLS

